

Come discover new friends at
Clifton Park Apartments



Clifton Park Apartments
1030 Cowell Farm Road
Washington, NC 27889
919-755-0558-Tel
919-755-0515-Fax

Pendergraph Management, LLC
P.O. Box 19691
Raleigh, NC 27619

Clifton Park Apartments

Washington, NC



*Brand New Affordable
Family Living*

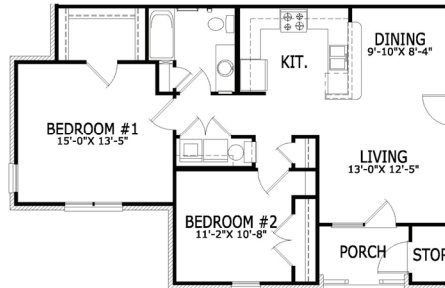
Clifton Park Apartments offer new two and three bedroom spacious apartment homes for families.

Our apartment homes are fully equipped with new appliances, wall-to-wall carpeting and tile flooring in the kitchen and bath areas.

You can visit with friends in the community room or enjoy a picnic with your family.

Come see what we're all about.

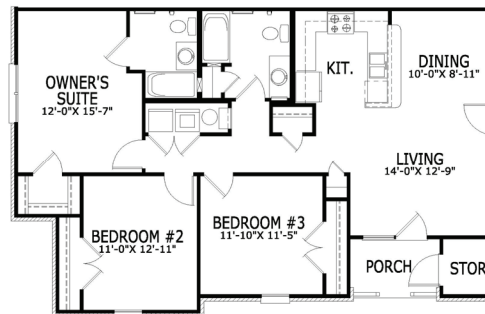
For more information,
please contact Kyle Gibson at
919-755-0558



Two Bedroom/One Bath

970 Square Feet

\$ _____



Three Bedroom/Two Bath

1220 Square Feet

\$ _____

Features and Amenities

- Range
- Frost Free Refrigerator
- Mini-Blinds
- Washer & Dryer Connections
- Gazebo
- Laundry Facility
- Ceiling Fans
- Picnic Areas
- Exterior Storage
- Community Room
- Playground
- Handicap Units Available

